



**PAA011Mi01**

**Polyclonal Antibody to Brain Derived Neurotrophic Factor (BDNF)**

**Organism Species: Homo sapiens (Human)**

**Mus musculus (Mouse)**

**Rattus norvegicus (Rat)**

**Oryctolagus cuniculus (Rabbit)**

**Sus scrofa; Porcine (Pig)**

**Capra hircus; Caprine (Goat)**

**Equus caballus; Equine (Horse)**

***Instruction manual***

FOR IN VITRO USE AND RESEARCH USE ONLY  
NOT FOR USE IN CLINICAL DIAGNOSTIC PROCEDURES

---

---

12th Edition (Revised in Aug, 2016)

## **[ PROPERTIES ]**

**Source:** Polyclonal antibody preparation

**Host:** Rabbit

**Purification:** Antigen-specific Affinity Chromatography.

**Traits:** Liquid

**Concentration:** 200µg/mL

**UOM:** 100µg

**Applications:** WB; ICC; IHC-P; IHC-F; ELISA; IP; IF; FCM.

## **[ IMMUNOGEN ]**

**Immunogen:** Recombinant BDNF (Pro20~Arg252) expressed in *E.coli*.

**Accession No.:** RPA011Mi01

## **[ ORGANISM SPECIES MORE ]**

**React with:** Human, mouse, rat, rabbit, porcine, caprine, equine;  
Other species have not been detected.

## **[ APPLICATIONS ]**

Western blotting: 0.5-2ug/ml

Immunocytochemistry in formalin fixed cells: 5-20ug/ml

Immunohistochemistry in formalin fixed frozen section: 5-20ug/ml

Immunohistochemistry in paraffin section: 5-20ug/ml

Enzyme-linked Immunosorbent Assay: 0.05-2ug/ml

Optimal working dilutions must be determined by end user.

## **[ FORMULATION ]**

**Form & Buffer:** Supplied as solution form in 0.01M PBS, pH7.4, containing 0.05% Proclin-300, 50% glycerol.

## **[ QUALITY CONTROL ]**

**Content:** The quality control contains recombinant BDNF disposed in loading buffer.

**Usage:** 10uL per well when 3,3'-Diaminobenzidine(DAB) as the substrate.

5uL per well when used in enhanced chemiluminescent (ECL).

**Note:** The quality control is specifically manufactured as the positive control. Not used for other purposes.

**Loading Buffer:** 100mM Tris(pH6.8), 1% SDS, 150mM NaCl, 50% glycerol, 0.02% BPB, 50mM DTT and 0.02% NaN<sub>3</sub>.

## **[ STORAGE AND STABILITY ]**

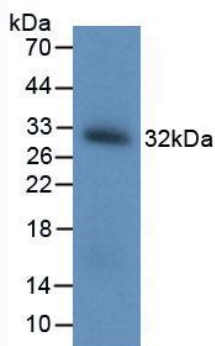
**Storage:** Avoid repeated freeze/thaw cycles.

Store at 4°C for frequent use.

Aliquot and store at -20°C for 12 months.

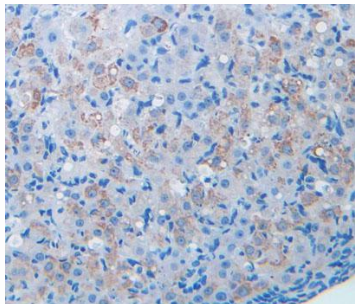
**Stability Test:** The thermal stability is described by the loss rate. The loss rate was determined by accelerated thermal degradation test, that is, incubate the protein at 37°C for 48h, and no obvious degradation and precipitation were observed. The loss rate is less than 5% within the expiration date under appropriate storage condition.

## **[ IDENTIFICATION ]**



**Figure 1. Western Blot**

**Sample: Recombinant BDNF**



**Figure 2. DAB staining on IHC-P**

**Samples:**

**Mouse Ovary Tissue**